

# Measuring Canadian Travel Patterns

JANUARY 1 - DECEMBER 12, 2021

2021 DATA VINTAGE



# PURPOSE

- The Measuring Canadian Travel Patterns dashboard created by Environics Analytics helps the Canadian travel and tourism industry understand the impact of the worldwide COVID-19 pandemic as it relates to Domestic Overnight Visitors within Canada, its **provinces, territories, and tourism regions**.
- With this dashboard we can easily compare visitor travel patterns (to prior weeks in 2021 and year over year 2019, and 2020).
- We can also compare different regions to assess the impact of the pandemic on Canadian travel patterns and identify when visitors start to return to British Columbia's respective tourism regions.



# METHODOLOGY

- Environics Analytics uses privacy compliant, anonymized mobile movement data to identify devices whose **Daily Common Evening Location** is 60 km or more away from their *Yearly Common Evening Location*.
- Data is aggregated and compared on a weekly basis versus the previous year and week.
  - (**Note:** Year over year data may not compare the exact same date range).
- Data is limited to devices that we can reliably infer their *Daily* and *Yearly* Common Evening Locations.
- Data has been standardized and normalized leveraging demographic data and PRIZM, their neighbourhood classification system.





# GLOSSARY

- **Timeframe:** The dashboard data starts the week of January 3, 2021 and is tracked on a weekly basis.
- **Domestic Overnight Visitors:** Extrapolated from a sample of mobile devices that spent at least one night more than 60KM away from their Yearly Common Evening Location.
- **Common Evening Location:** A location where the device is normally seen between 6PM and 8AM the following morning.



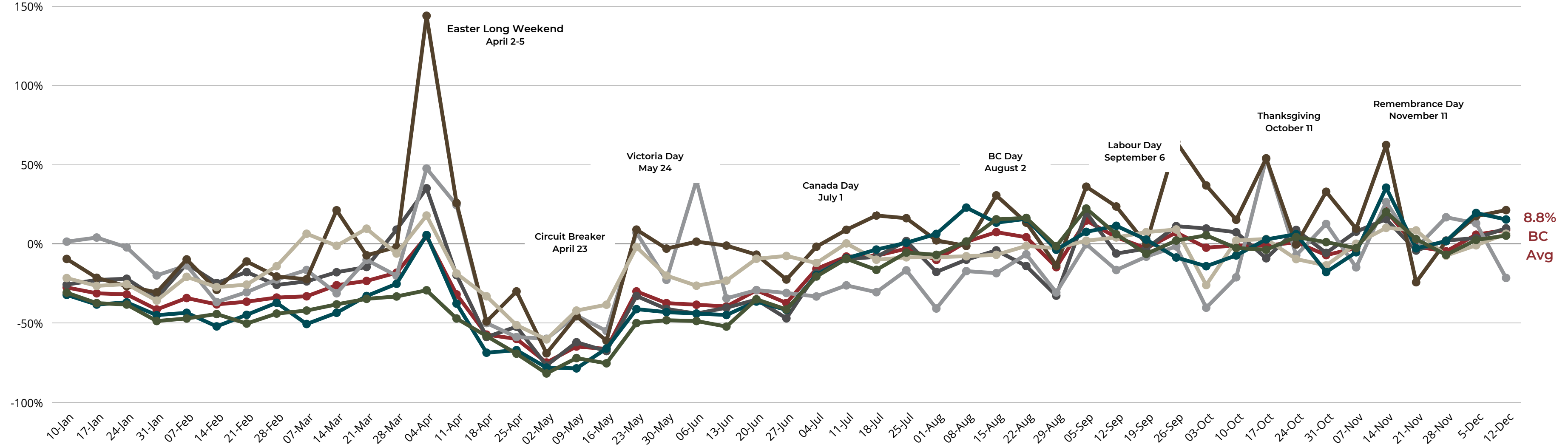
# INTRODUCTION

- Environics Analytics' Weekly Tourism Tracker filters data by Canada, Province or Territory. R1 or Region 1 is selected as the region from which to make comparisons, in this case, the province of BC.
- R2 or Region 2 represents the comparison region, in this case each of the regions of BC.
- **BC Regions:**
  - Cariboo Chilcotin Coast
  - Kootenay Rockies
  - Northern B.C
  - Thompson-Okanagan
  - Vancouver Island
  - Vancouver, Coast & Mountains



# DOMESTIC OVERNIGHT VISITORS - WEEKLY YEAR OVER YEAR (2019 VS. 2021) VARIATION

## B.C REGIONS

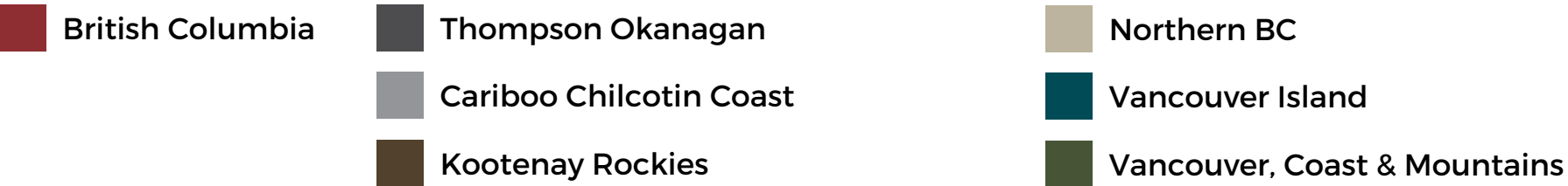


### Key Findings:

- Average Domestic Overnight Visitation to BC for Week 49 (Dec 6 - 12, 2021) is **up 8.8%** compared to the same week in 2019.
- The Thompson Okanagan, Kootenay Rockies, Northern BC, and Vancouver, Coast & Mountains saw an **increase** in visitation when comparing Week 48 (Nov 29 - Dec 5, 2021) to Week 49 (Dec 6 - 12, 2021), Cariboo Chilcotin Coast and Vancouver Island saw a **decrease**.
- British Columbia **increased by 3%** when comparing Week 48 (Nov 29 - Dec 5, 2021) to Week 49 (Dec 6 - 12, 2021).

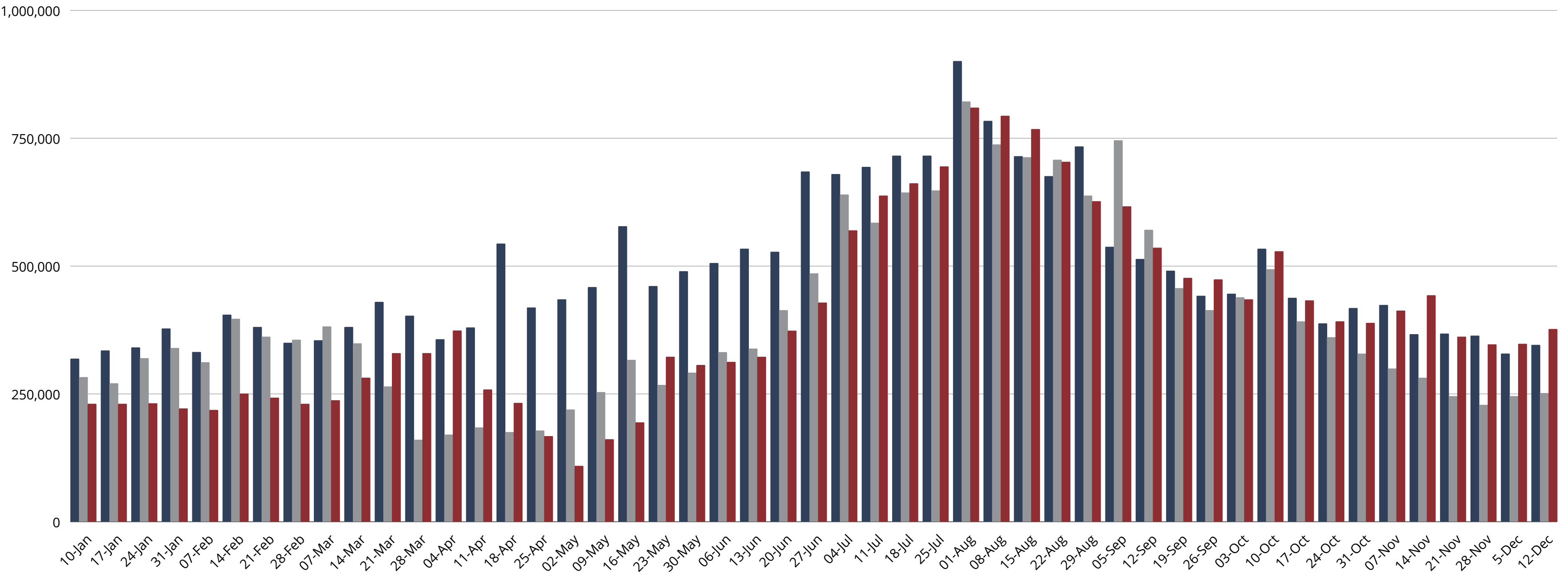
### Notes:

- The baseline of comparison is now 2019, with percentages above 0% indicating higher rates of visitation in 2021 than 2019, and percentages below 0% indicating lower rates of visitation in 2021 than 2019.
- BC issued a new order to limit non-essential travel within the Province on April 23, 2021 resulting in a drop in visitation during the week ending May 2.
- The provincial reopening plan was announced on May 25, 2021 with recreational travel being allowed within travel regions, leading to slight increases the following weeks and further slight increases since Step 2 of reopening plan began on June 15.
- The Weeks of March 28 (Good Friday), April 4 (Easter Monday), May 23 (Victoria Day), July 4 (Canada Day), August 2 (BC Day), September 6 (Labour Day), October 11 (Thanksgiving), November 11 (Remembrance Day) were Long Weekends
- Data is compared on a week-by-week basis and may not reflect the exact same date range year over year. Increases and decreases are in the differential in visitor volume year over year.



# DOMESTIC OVERNIGHT VISITORS - WEEKLY YEAR OVER YEAR (2019, 2020, 2021) VARIATION

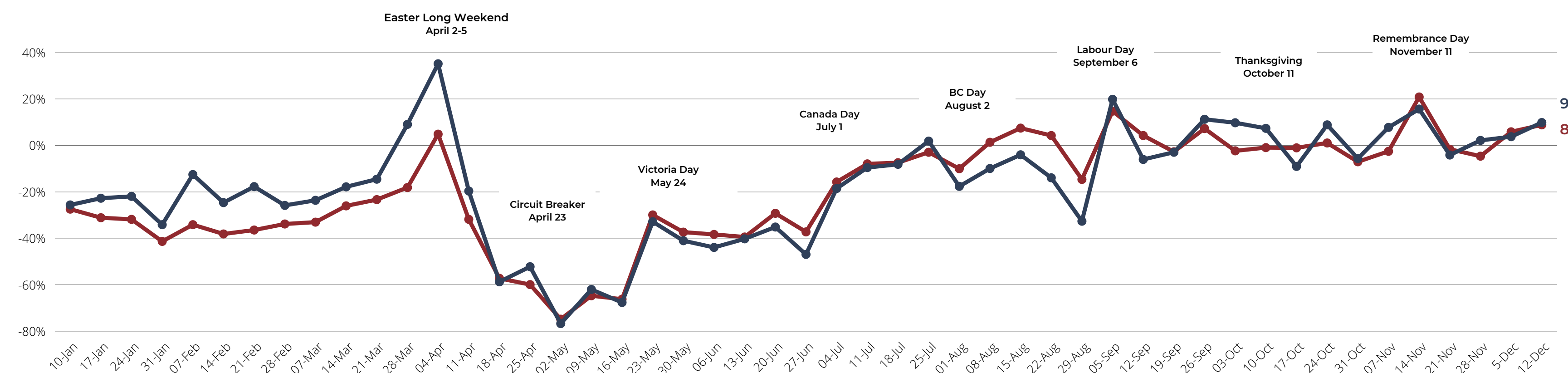
## BRITISH COLUMBIA





# DOMESTIC OVERNIGHT VISITORS - WEEKLY YEAR OVER YEAR (2019 VS. 2021) VARIATION

## THOMPSON OKANAGAN REGION



### Key Findings:

- Domestic Overnight Visitation to the Thompson Okanagan for Week 49 (Dec 6 - 12, 2021) is **up 9.8%** compared to the same week in 2019.
- The Thompson Okanagan saw **1% more visitation** when compared to British Columbia during Week 49 (Dec 6 - 12, 2021).
- Visitation to the Thompson Okanagan **increased by 6.1%** and British Columbia **increased by 3%** when comparing Week 48 (Nov 29 - Dec 5, 2021) to Week 49 (Dec 6 - 12, 2021).

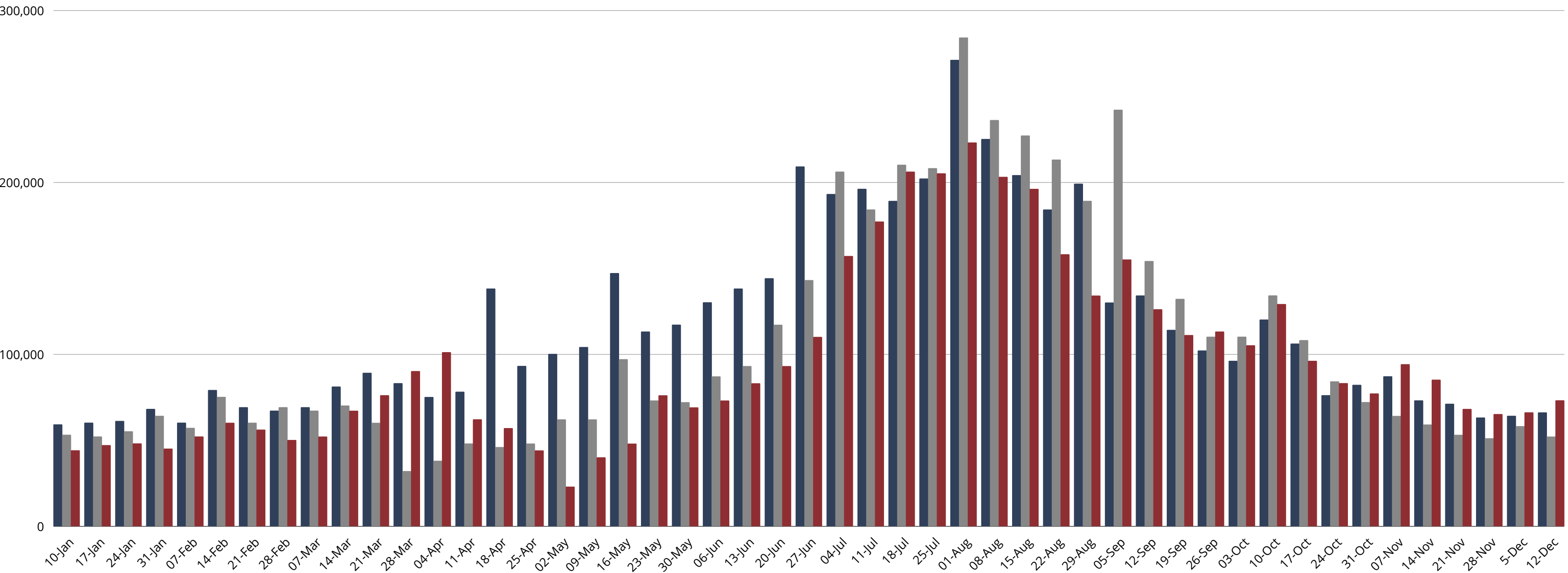
### Notes:

- The baseline of comparison is now 2019, with percentages above 0% indicating higher rates of visitation in 2021 than 2019, and percentages below 0% indicating lower rates of visitation in 2021 than 2019.
- BC issued a new order to limit non-essential travel within the Province on April 23, 2021 resulting in a drop in visitation during the week ending May 2.
- The provincial reopening plan was announced on May 25, 2021 with recreational travel being allowed within travel regions, leading to slight increases the following weeks and further slight increases since Step 2 of reopening plan began on June 15.
- The Weeks of March 28 (Good Friday), April 4 (Easter Monday), May 23 (Victoria Day), July 4 (Canada Day), August 2 (BC Day), September 6 (Labour Day), October 11 (Thanksgiving), November 11 (Remembrance Day) were Long Weekends
- Data is compared on a week-by-week basis and may not reflect the exact same date range year over year. Increases and decreases are in the differential in visitor volume year over year.



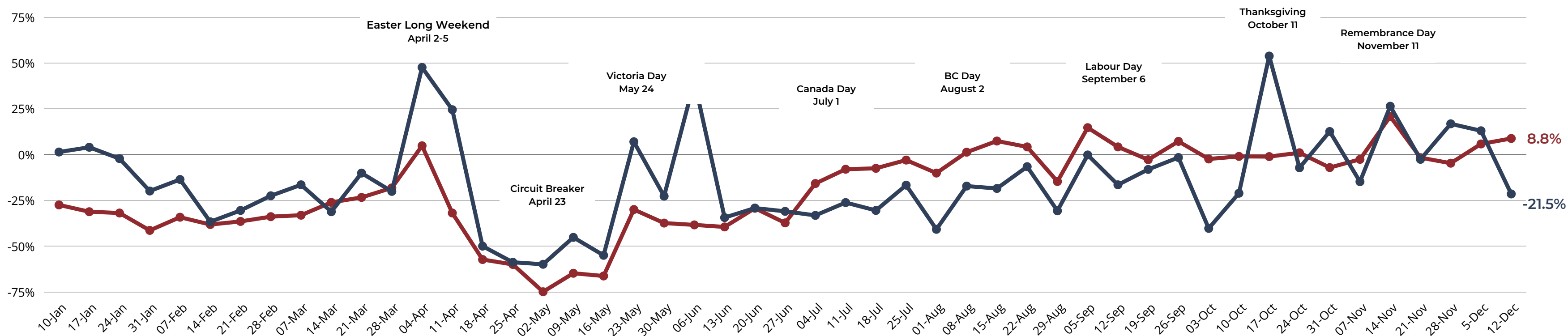
# DOMESTIC OVERNIGHT VISITORS - WEEKLY YEAR OVER YEAR (2019, 2020, 2021) VARIATION

## THOMPSON OKANAGAN REGION



# DOMESTIC OVERNIGHT VISITORS - WEEKLY YEAR OVER YEAR (2019 VS. 2021) VARIATION

## CARIBOO CHILCOTIN COAST



### Key Findings:

- Domestic Overnight Visitation to the Cariboo Chilcotin Coast for Week 49 (December 6 - 12, 2021) is **down 21.5%** compared to the same week in 2019.
- The Cariboo Chilcotin Coast saw **12.7% less visitation** when compared to British Columbia during Week 49 (Dec 6 - 12, 2021).
- Visitation to the Cariboo Chilcotin Coast **decreased by 8.5%** and British Columbia **increased by 3%** when comparing Week 48 (Nov 29 - Dec 5, 2021) to Week 49 (Dec 6 - 12, 2021).

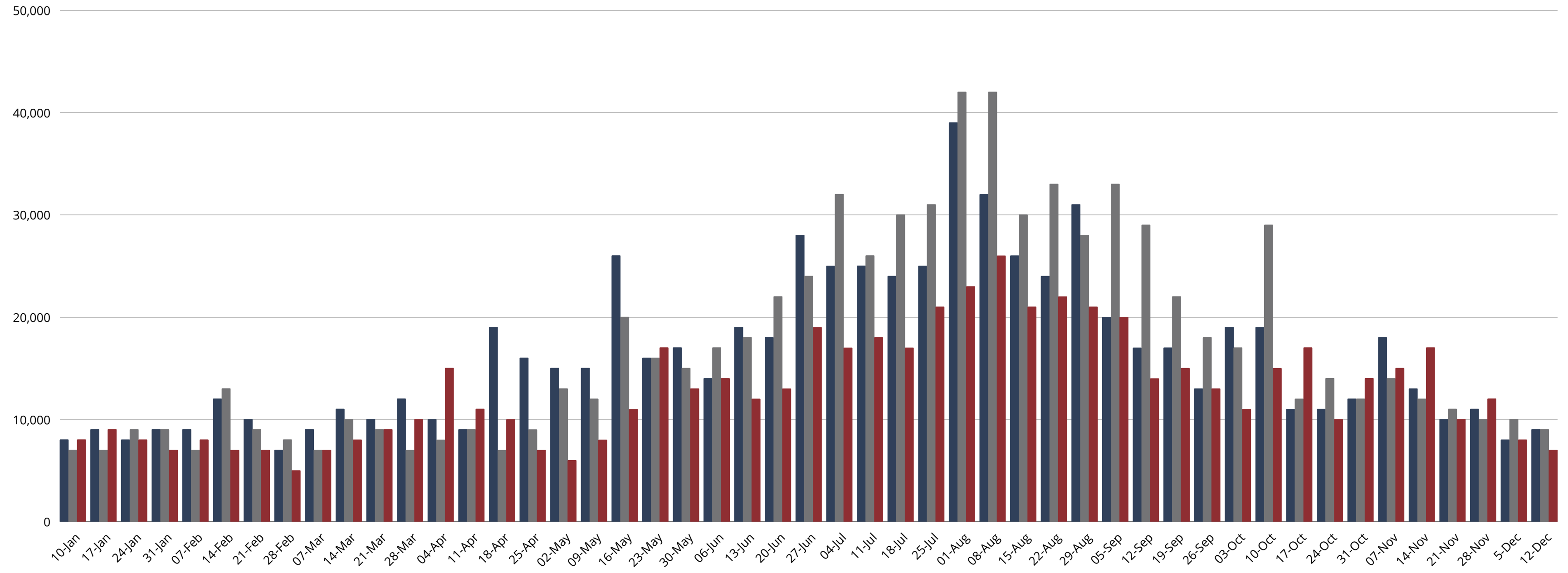
### Notes:

- The baseline of comparison is now 2019, with percentages above 0% indicating higher rates of visitation in 2021 than 2019, and percentages below 0% indicating lower rates of visitation in 2021 than 2019.
- BC issued a new order to limit non-essential travel within the Province on April 23, 2021 resulting in a drop in visitation during the week ending May 2.
- The provincial reopening plan was announced on May 25, 2021 with recreational travel being allowed within travel regions, leading to slight increases the following weeks and further slight increases since Step 2 of reopening plan began on June 15.
- The Weeks of March 28 (Good Friday), April 4 (Easter Monday), May 23 (Victoria Day), July 4 (Canada Day), August 2 (BC Day), September 6 (Labour Day), October 11 (Thanksgiving), November 11 (Remembrance Day) were Long Weekends
- Data is compared on a week-by-week basis and may not reflect the exact same date range year over year. Increases and decreases are in the differential in visitor volume year over year.



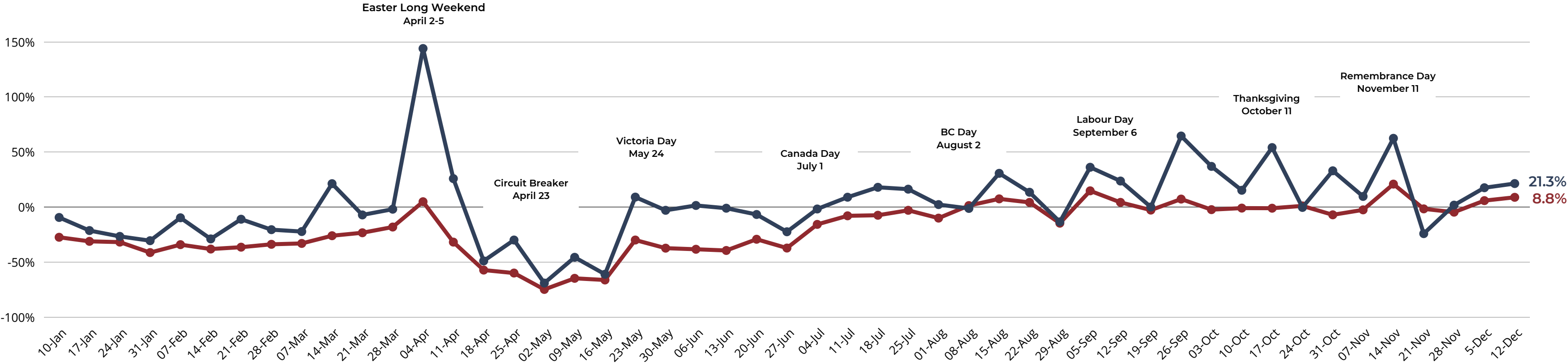
# DOMESTIC OVERNIGHT VISITORS - WEEKLY YEAR OVER YEAR (2019, 2020, 2021) VARIATION

## CARIBOO CHILCOTIN COAST



# DOMESTIC OVERNIGHT VISITORS - WEEKLY YEAR OVER YEAR (2019 VS. 2021) VARIATION

## KOOTENAY ROCKIES



### Key Findings:

- Domestic Overnight Visitation to the Kootenay Rockies for Week 49 (Dec 6 - 12, 2021) is **up 21.3%** compared to the same week in 2019
- The Kootenay Rockies saw **12.5% more visitation** when compared to British Columbia during Week 49 (Dec 6 - 12, 2021).
- Visitation to the Kootenay Rockies **increased by 3.8%** and British Columbia **increased by 3%** when comparing Week 48 (Nov 29 - Dec 5, 2021) to Week 49 (Dec 6 - 12, 2021).

### Notes:

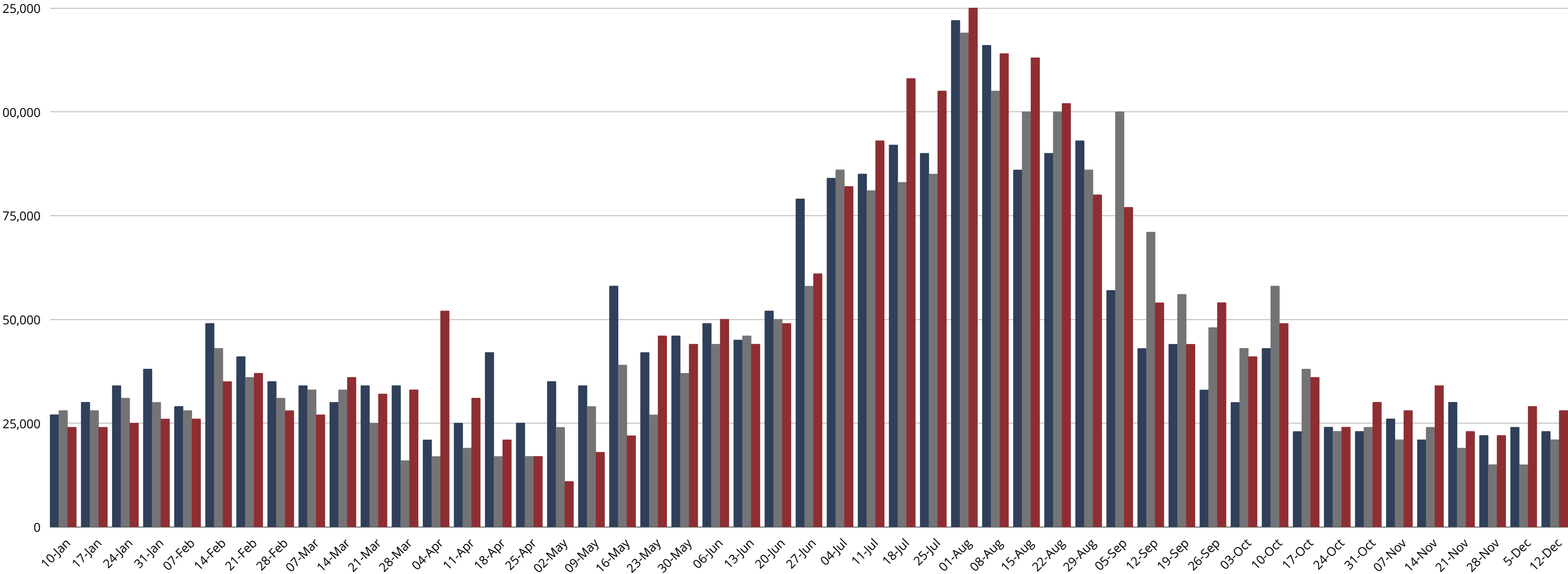
- The baseline of comparison is now 2019, with percentages above 0% indicating higher rates of visitation in 2021 than 2019, and percentages below 0% indicating lower rates of visitation in 2021 than 2019.
- BC issued a new order to limit non-essential travel within the Province on April 23, 2021 resulting in a drop in visitation during the week ending May 2.
- The provincial reopening plan was announced on May 25, 2021 with recreational travel being allowed within travel regions, leading to slight increases the following weeks and further slight increases since Step 2 of reopening plan began on June 15.
- The Weeks of March 28 (Good Friday), April 4 (Easter Monday), May 23 (Victoria Day), July 4 (Canada Day), August 2 (BC Day), September 6 (Labour Day), October 11 (Thanksgiving), November 11 (Remembrance Day) were Long Weekends
- Data is compared on a week-by-week basis and may not reflect the exact same date range year over year. Increases and decreases are in the differential in visitor volume year over year.





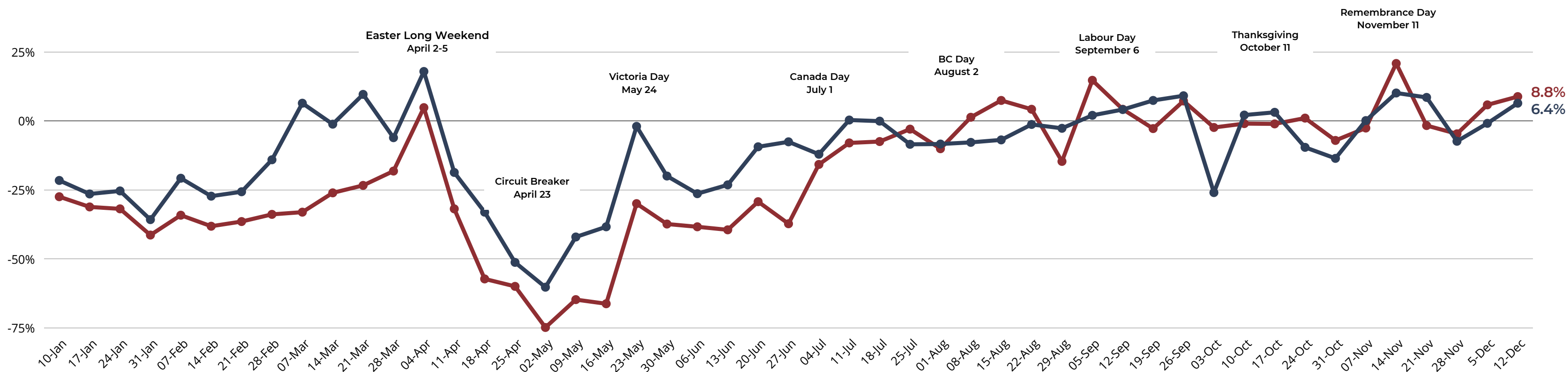
# DOMESTIC OVERNIGHT VISITORS - WEEKLY YEAR OVER YEAR (2019, 2020, 2021) VARIATION

## KOOTENAY ROCKIES



# DOMESTIC OVERNIGHT VISITORS - WEEKLY YEAR OVER YEAR (2019 VS. 2021) VARIATION

## NORTHERN BC



### Key Findings:

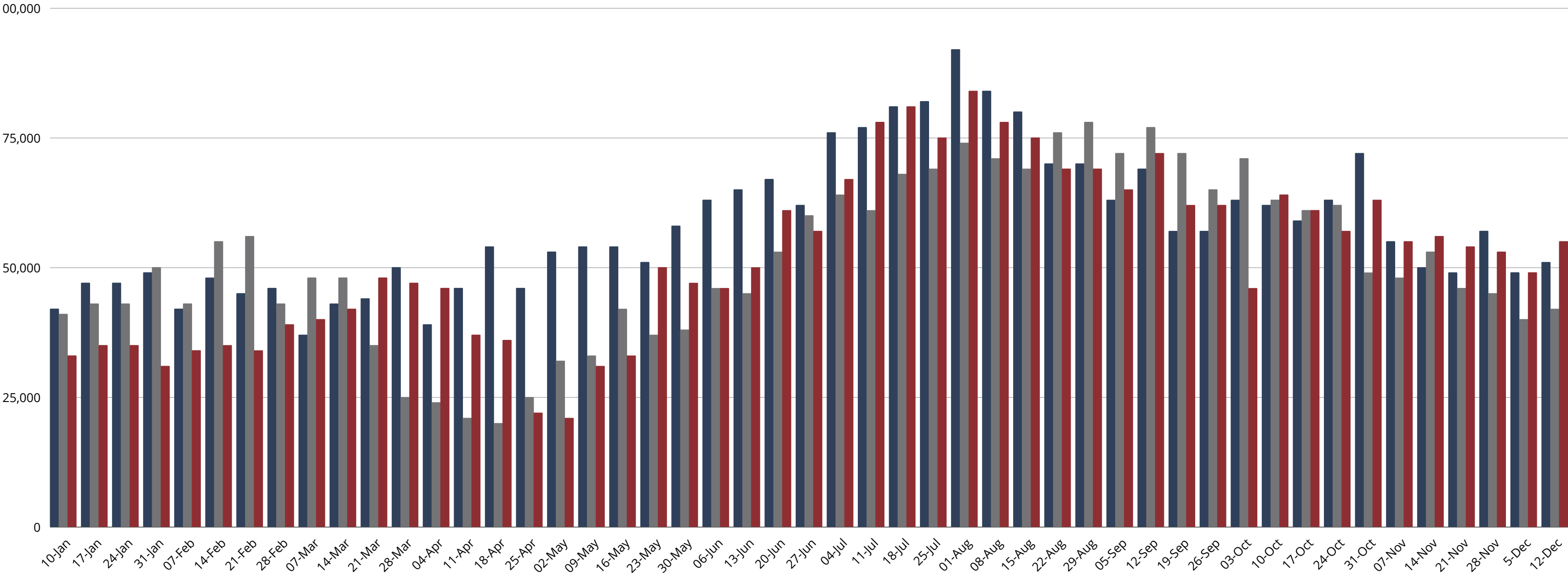
- Domestic Overnight Visitation to Northern BC for Week 49 (Dec 6 - 12, 2021) is **up 6.4%** compared to the same week in 2019.
- Northern BC saw **2.4% less visitation** when compared to British Columbia during Week 49 (Dec 6 - 12, 2021).
- Visitation to Northern BC **increased 5.5%** and British Columbia **increased by 3%** when comparing Week 48 (Nov 29 - Dec 5, 2021) to Week 49 (Dec 6 - 12, 2021).

### Notes:

- The baseline of comparison is now 2019, with percentages above 0% indicating higher rates of visitation in 2021 than 2019, and percentages below 0% indicating lower rates of visitation in 2021 than 2019.
- BC issued a new order to limit non-essential travel within the Province on April 23, 2021 resulting in a drop in visitation during the week ending May 2.
- The provincial reopening plan was announced on May 25, 2021 with recreational travel being allowed within travel regions, leading to slight increases the following weeks and further slight increases since Step 2 of reopening plan began on June 15.
- The Weeks of March 28 (Good Friday), April 4 (Easter Monday), May 23 (Victoria Day), July 4 (Canada Day), August 2 (BC Day), September 6 (Labour Day), October 11 (Thanksgiving), November 11 (Remembrance Day) were Long Weekends
- Data is compared on a week-by-week basis and may not reflect the exact same date range year over year. Increases and decreases are in the differential in visitor volume year over year.

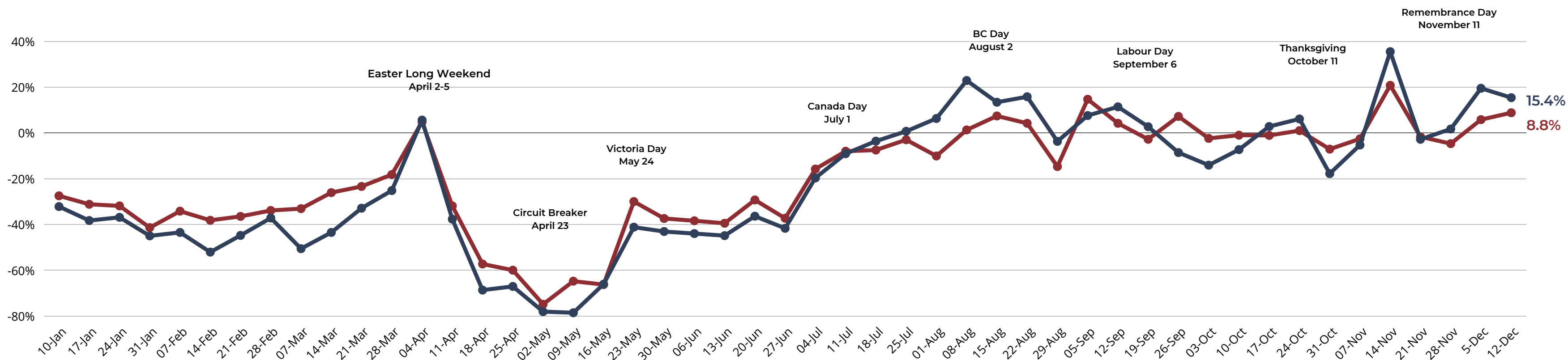
# DOMESTIC OVERNIGHT VISITORS - WEEKLY YEAR OVER YEAR (2019, 2020, 2021) VARIATION

## NORTHERN BC



# DOMESTIC OVERNIGHT VISITORS - WEEKLY YEAR OVER YEAR (2019 VS. 2021) VARIATION

## VANCOUVER ISLAND



### Key Findings:

- Domestic Overnight Visitation to Vancouver Island for Week 49 (Dec 6 - 12, 2021) is **up 15.4%** compared to the same week in 2019.
- Vancouver Island saw **6.6% more visitation** when compared to British Columbia during Week 49 (Dec 6 - 12, 2021).
- Visitation to Vancouver Island **decreased by 4.1%** and British Columbia **increased by 3%** when comparing Week 48 (Nov 29 - Dec 5, 2021) to Week 49 (Dec 6 - 12, 2021).

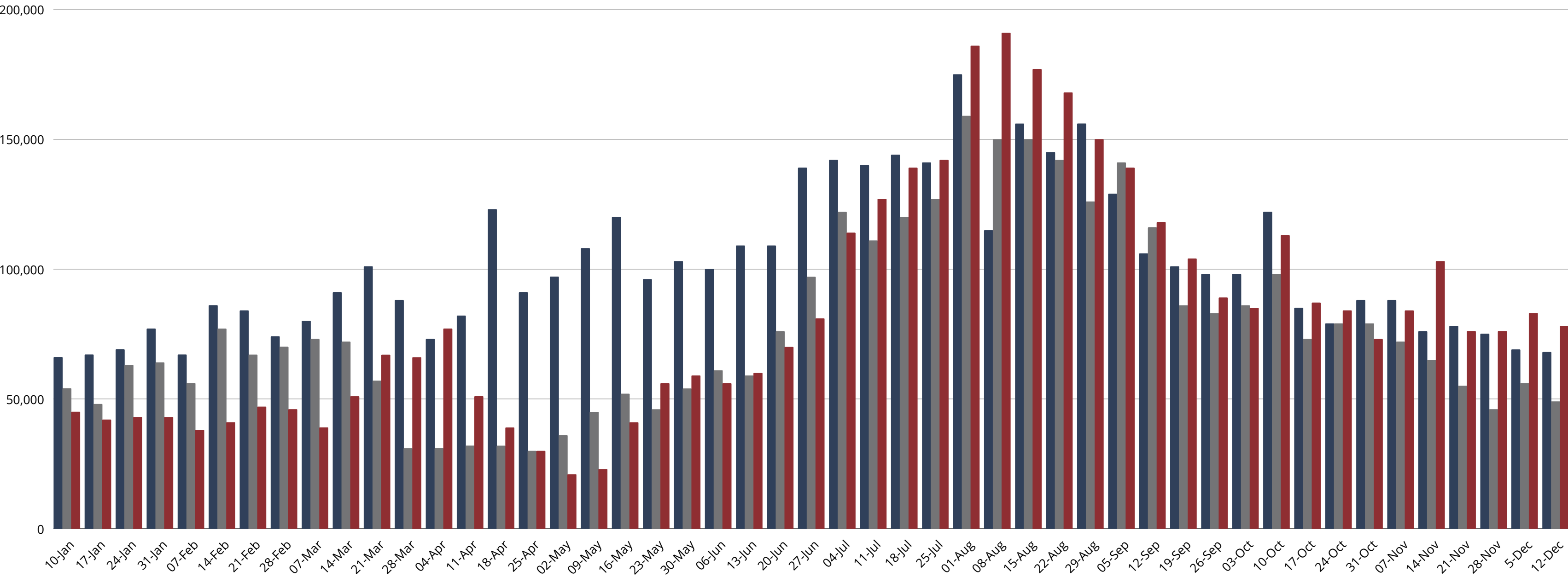
### Notes:

- The baseline of comparison is now 2019, with percentages above 0% indicating higher rates of visitation in 2021 than 2019, and percentages below 0% indicating lower rates of visitation in 2021 than 2019.
- BC issued a new order to limit non-essential travel within the Province on April 23, 2021 resulting in a drop in visitation during the week ending May 2.
- The provincial reopening plan was announced on May 25, 2021 with recreational travel being allowed within travel regions, leading to slight increases the following weeks and further slight increases since Step 2 of reopening plan began on June 15.
- The Weeks of March 28 (Good Friday), April 4 (Easter Monday), May 23 (Victoria Day), July 4 (Canada Day), August 2 (BC Day), September 6 (Labour Day), October 11 (Thanksgiving), November 11 (Remembrance Day) were Long Weekends
- Data is compared on a week-by-week basis and may not reflect the exact same date range year over year. Increases and decreases are in the differential in visitor volume year over year.



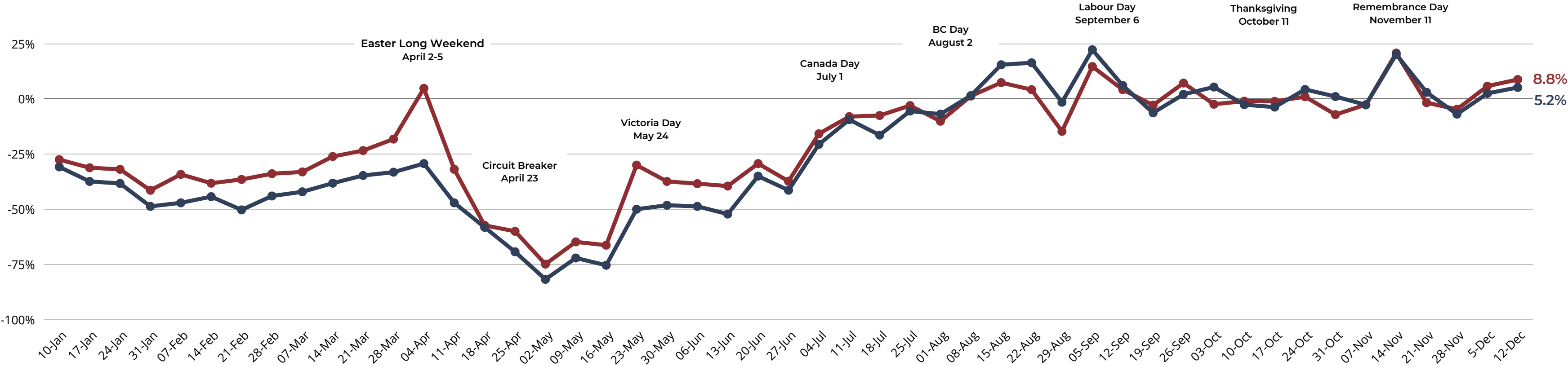
# DOMESTIC OVERNIGHT VISITORS - WEEKLY YEAR OVER YEAR (2019, 2020, 2021) VARIATION

## VANCOUVER ISLAND



# DOMESTIC OVERNIGHT VISITORS - WEEKLY YEAR OVER YEAR (2019 VS. 2021) VARIATION

## VANCOUVER, COAST & MOUNTAINS



### Key Findings:

- Domestic Overnight Visitation to Vancouver Coast & Mountains for Week 49 (Dec 6 - 12, 2021) is **up 5.2%** compared to the same week in 2019.
- Vancouver, Coast & Mountains saw **3.6% less visitation** when compared to British Columbia Week 49 (Dec 6 - 12, 2021).
- Visitation to Vancouver, Coast & Mountains **increased by 2.7%** and British Columbia **increased by 3%** when comparing Week 48 (Nov 29 - Dec 5, 2021) to Week 49 (Dec 6 - 12, 2021).

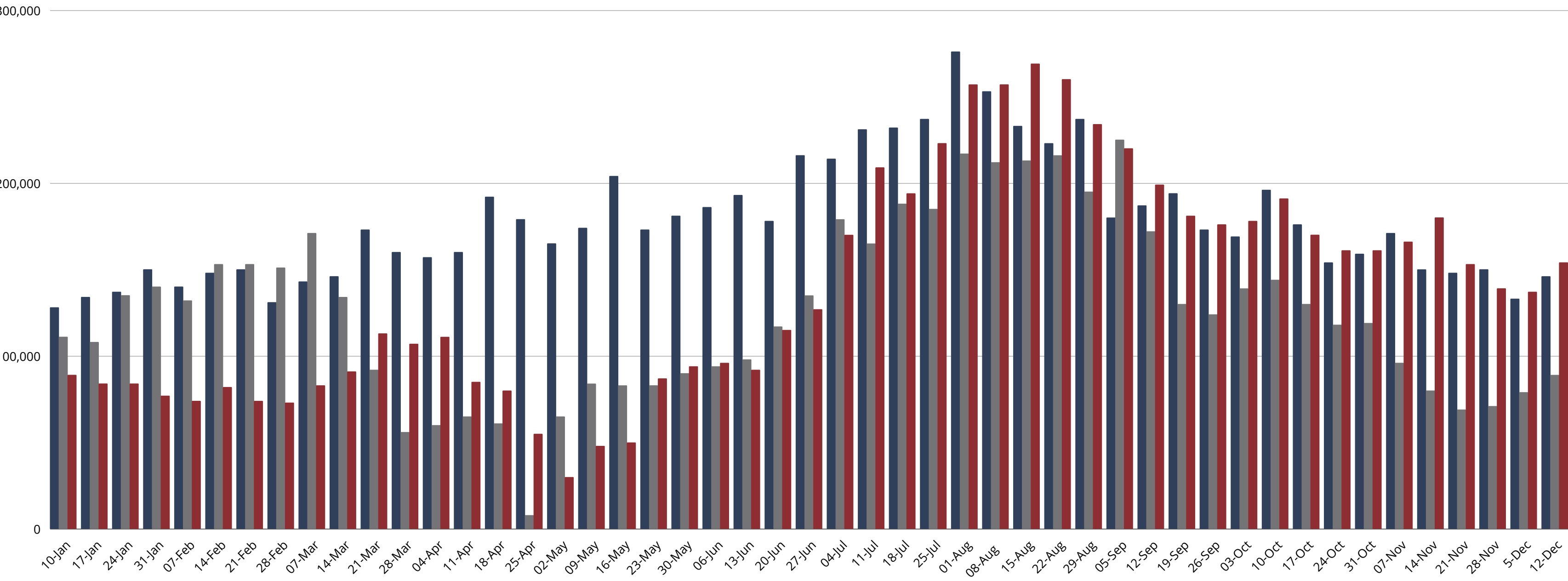
### Notes:

- The baseline of comparison is now 2019, with percentages above 0% indicating higher rates of visitation in 2021 than 2019, and percentages below 0% indicating lower rates of visitation in 2021 than 2019.
- BC issued a new order to limit non-essential travel within the Province on April 23, 2021 resulting in a drop in visitation during the week ending May 2.
- The provincial reopening plan was announced on May 25, 2021 with recreational travel being allowed within travel regions, leading to slight increases the following weeks and further slight increases since Step 2 of reopening plan began on June 15.
- The Weeks of March 28 (Good Friday), April 4 (Easter Monday), May 23 (Victoria Day), July 4 (Canada Day), August 2 (BC Day), September 6 (Labour Day), October 11 (Thanksgiving), November 11 (Remembrance Day) were Long Weekends
- Data is compared on a week-by-week basis and may not reflect the exact same date range year over year. Increases and decreases are in the differential in visitor volume year over year.



# DOMESTIC OVERNIGHT VISITORS - WEEKLY YEAR OVER YEAR (2019, 2020, 2021) VARIATION

## VANCOUVER, COAST & MOUNTAINS



# STR Destination Report

DECEMBER 05 - 11, 2021





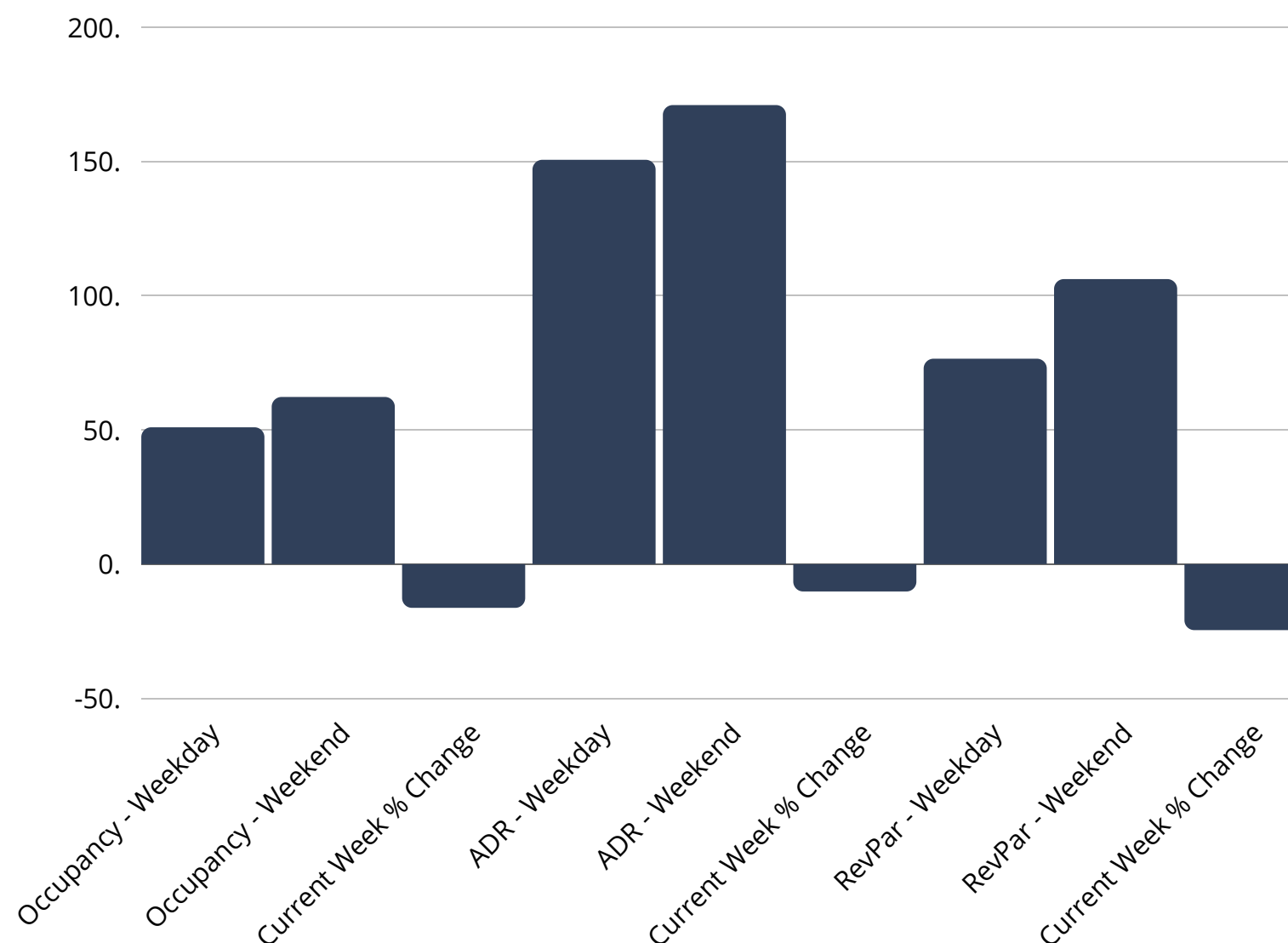
# STR SUMMARY BC & REGIONS

DECEMBER 05-11, 2021

- British Columbia had a **50.7%** occupancy from Sunday-Thursday and a **62.0%** occupancy during the weekend, down **-16.0%** compared to the same week in 2019.
- British Columbia had an ADR of **\$150.33** from Sunday-Thursday and an ADR of **\$170.71** during the weekend, down **-9.9%** compared to the same week in 2019.
- British Columbia had a RevPAR of **\$76.25** from Sunday-Thursday and a RevPAR of **\$105.90** during the weekend, down **-24.3%** compared to the same week in 2019.

## REGIONAL STATS WEEKEND OF DEC 10-11, 2021:

- Cariboo Chilcotin Coast: OCC 62.9% ADR \$133.09 REVPAR \$83.68
- Kootenay Rockies: OCC 37.8% ADR \$133.88 REVPAR \$50.56
- Northern BC: OCC 57.3% ADR \$120.20 REVPAR \$68.83
- Thompson Okanagan: OCC 54.5% ADR \$125.61 REVPAR \$68.50
- Vancouver Island: OCC 65.8% ADR \$165.97 REVPAR \$109.24
- Vancouver: OCC 65.6% ADR \$174.39 REVPAR \$114.43
- Whistler: OCC 84.3% ADR \$354.87 REVPAR \$299.13



PARTICIPATE IN THE STR "STAR" REPORT: SUBMIT YOUR DATA AND RECEIVE FREE REPORTS BENCHMARKING YOUR PERFORMANCE AGAINST YOUR MARKET  
SIGN UP TODAY FOR FREE HERE:  
<https://surveys.str.com/s3/Hotel-Enrollment-Form>

# GLOSSARY

- **Occupancy:** Calculated by the number of occupied rooms divided by the number of available rooms that physically exist in a hotel
- **Average Daily Rate (ADR):** Represents the average rental income per paid occupied room in a given time period, however, ADR itself cannot be used to measure a hotel's performance
- **Revenue per Available Room (RevPAR):** Calculated by multiplying a hotel's ADR by its occupancy rate, an increase in RevPAR most likely indicates an improvement in occupancy rate and can be used to measure a hotel's performance

# CONTACT US



## **Kelly Galaski**

*Managing Director, Symphony Tourism Services*

Email: [kelly@symphonytourism.ca](mailto:kelly@symphonytourism.ca)

Phone: 778.721.5448

[symphonytourismservices.com](http://symphonytourismservices.com)

